



How-To: Create Pie Chart in Jaspersoft Studio

A panel similar to the one in this section is used for the following chart types: Pie, SemiPie.

To create the report for the chart:

1. Create a new, blank report using the Sample DB data adapter and the query: `select * from orders`.
2. Click **Next**.
3. Click  to select all fields, then click **Finish**.
4. Delete all bands except for **Title** and **Summary**.
5. Enlarge the Summary band to 500 pixels by changing the **Height** entry in the **Band Properties** view.

To create the chart:

1. Click  **HTML5 Charts** in the **Components Pro** section of the **Palette**. The cursor changes to  to show that you can move it. Click and drag in the Summary band to size and place the chart.

The HTML5 Chart Edit Dialog is displayed.

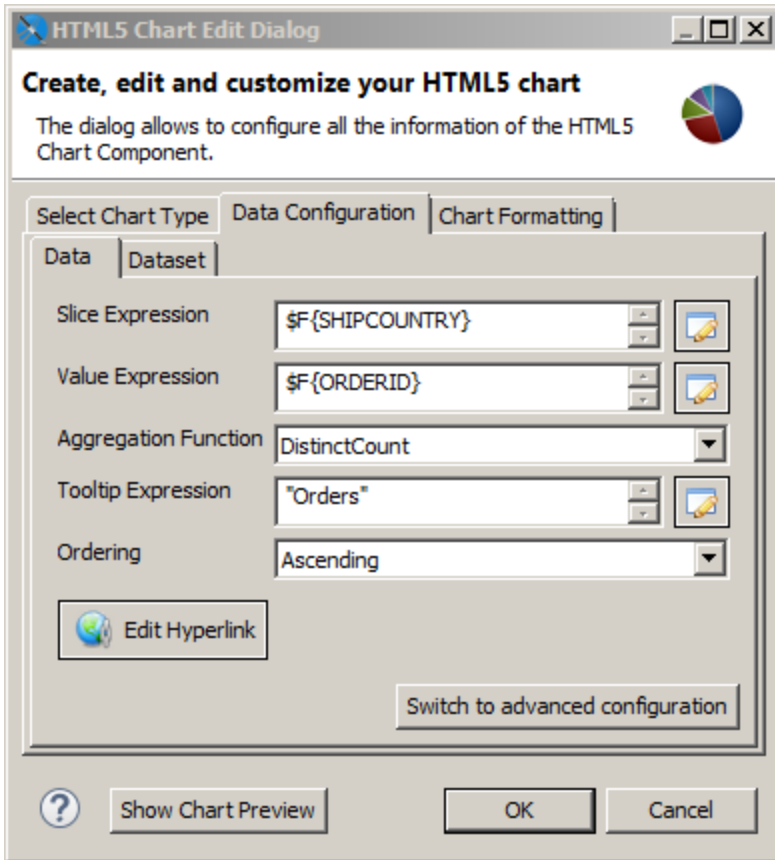
1. Create a new report using the Sample DB data adapter.
2. Start with the query:

```
select * from orders
```

3. Choose  **HTML5 Charts** from the **Components Pro** section of the **Palette**, and drag it into the Summary band of the report.

The HTML5 Chart Edit Dialog is displayed.

4. Select a chart type based on the information you want to display. You can use the menu at the left to restrict the list to a particular type of chart. For this example, choose **Pie**.
 5. Click the Data Configuration tab. This tab includes options for configuring chart dataset, chart properties, and highlighting. The options on this tab reflect the type of chart you selected. The dialog shown in this example is used for pie and semi-pie charts.
-



HTML5 Charts Properties > Chart Data > Configuration


6. Enter the required information on the Data sub-tab. For this example:

- **Slice Expression** – Enter the expression you want to use for the slices. You can enter the expression directly, or click the Expression Editor. For this example, use `$F{SHIPCOUNTRY}`.
- **Value Expression** – Enter the expression you want to use as a base for the measure calculation. For this example, use `$F{ORDERID}`.
- **Aggregation Function** – Select the function to apply to the value expression. For this example, use `DistinctCount`.
- **Tooltip Expression** – Enter an expression to display when a user hovers over a slice of the pie. For this example, enter `"Orders"`.
- **Ordering** – Select an order for the slices. For this example, choose `Ascending`. This displays the slices in alphabetical order.

7. To preview the chart from inside the dialog box, click **Show Chart Preview**.

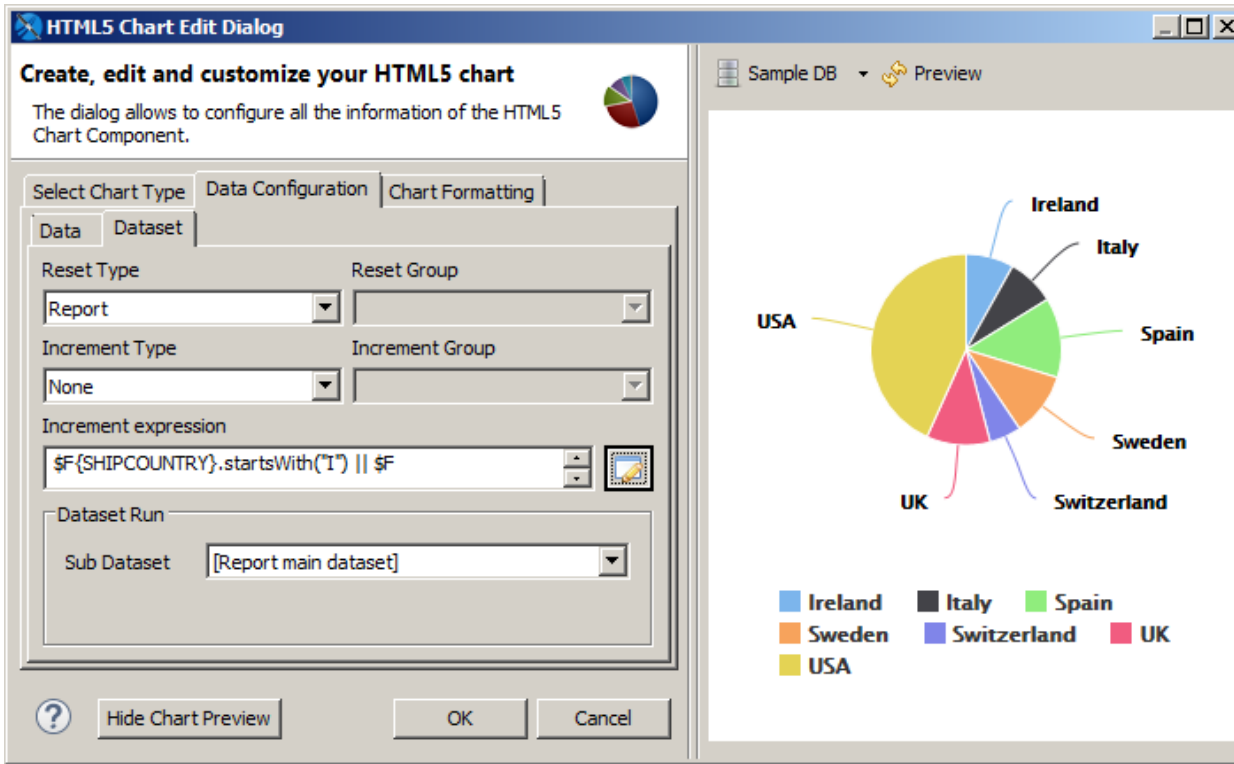
A preview is displayed to the right of the dialog. This preview can take some time to load the first time it is run.

8. Click the Dataset sub-tab. This sub-tab lets you choose a dataset and dataset properties. For this example, use the **dataset**.

9. You can optionally filter the dataset by entering an expression in the **Increment expression** text box. You can enter an expression and click  to open the Expression Editor. For this example, filter your dataset using the following increment expression:

```
$F{SHIPCOUNTRY}.startsWith("I") ||  
$F{SHIPCOUNTRY}.startsWith("S") ||  
$F{SHIPCOUNTRY}.startsWith("U")
```

10. Click  to refresh the preview.

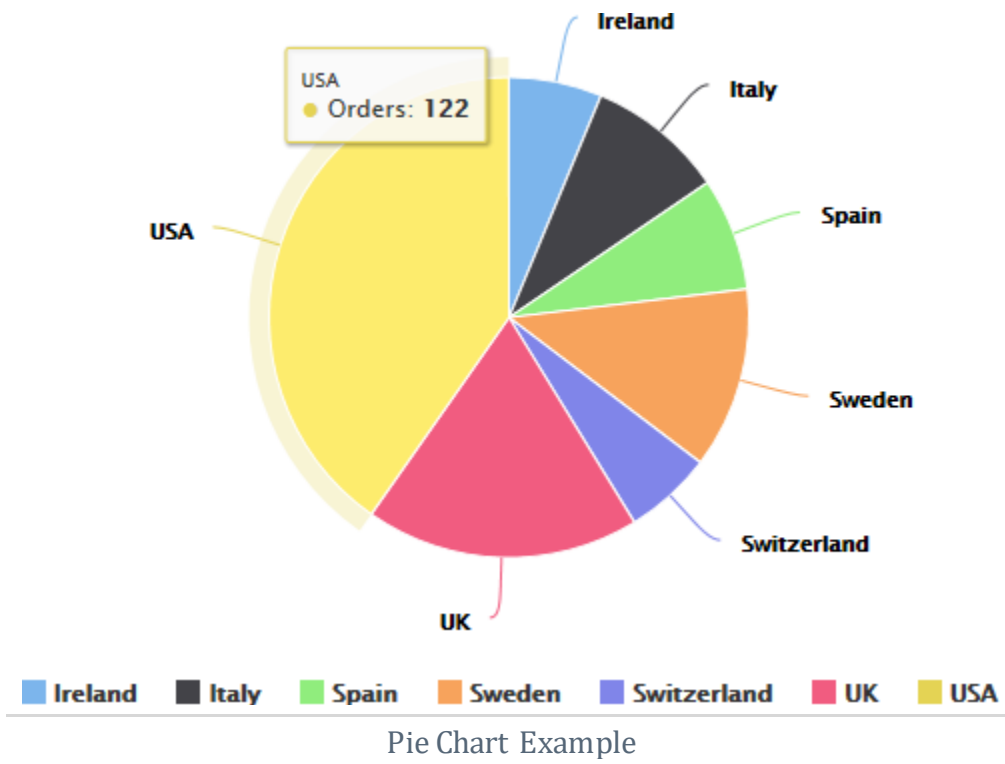


HTML5 Charts Properties > Chart Data > Configuration

11. Click **OK** to close the HTML5 Chart Edit dialog.

A placeholder for the chart is inserted in design view of your report. The Design view of a report doesn't display live data for a chart.

12. Save, then click the **Preview** tab to see your chart. To see an interactive preview, select HTML from the Preview menu. Click over a pie segment to see the number of orders.



Courtesy: <https://community.jaspersoft.com/documentation/tibco-jaspersoft-studio-user-guide/v640/example-pie-chart>

Modified: 2021.10.04.7.15.AM

Dököll Solutions, Inc.